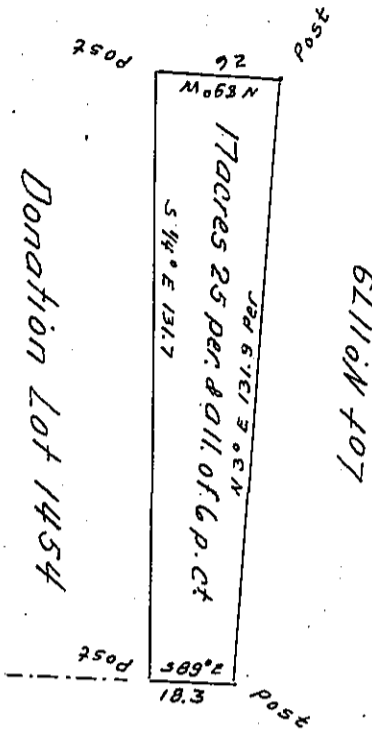


Charles Bourne

Courses  
 S. 89° E - 18.3 per.  
 N. 3° E - 131.9 "  
 N. 89° W - 26. "  
 S. 14° E - 131.7 "



Joel Jones

Draft of a tract of land Containing Seventeen Acres twenty five perches and allowance of Six per cent for roads &c. Situated in Randolph township in the County of Crawford. Surveyed the fifth day of October A.D. 1870. in pursuance of a Warrant granted to B. J. Mattison dated the ninth day of September A.D. 1870.

Jacob M. Campbell  
 Sur. Gen.

Thos Van Horne  
 C. S.

IN TESTIMONY that the above is a copy of the original remaining on file in the Department of Internal Affairs of Pennsylvania, made conformably to an Act of Assembly approved the 16th day of February, 1833, I have hereunto set my Hand and caused the Seal of said Department to be affixed at Harrisburg, this twenty third day of March 1906.

*Samuel R. Brown*  
 Secretary of Internal Affairs.